

A rowing machine is positioned in a gym setting, with a large window in the background showing a wooden deck and greenery. The machine is dark-colored and has a prominent flywheel. The floor is a dark, textured material, likely rubber or a similar durable surface. The text "TOUGH FLOORS" is overlaid in large, white, bold, sans-serif capital letters across the center of the image.

# TOUGH FLOORS

Rhino Rubber offers a wide range of rubber safety floorings & similar products in a wide range of colors and designs at cost effective prices which makes life simple....



### **RHINO RUBBER FLOORS SALIENT FEATURES**

- NON SLIP
- DURABLE! HIGH QUALITY
- SOFT UNDERFOOT
- LOW MAINTENANCE
- NOISE REDUCTION
- ENVIRONMENT FRIENDLY
- IMPACT ABSORPTION
- EASY TO INSTALL
- WIDE COLORS & DESIGNS

### **RHINO RUBBER FLOORS CAN BE USED IN THE FOLLOWING AREAS:**

- DRIVE WAY
- PARKING LOTS
- GARDEN PATH
- GARDEN HOUSE
- BOAT & MARINAS
- JOGGING TRACKS
- PEDESTRIAN AREAS
- GYMNASIUM AREAS
- CHILDREN PLAY AREAS
- SWIMMING POOL DECKS
- COMMERCIAL AREA  
FLAT ROOFS
- INDOOR & OUTDOOR  
SPORTS AREAS

**DENSITY: 0.94 GMS/CM3**

**DESIGNS: PLAIN & INTERLOCKING**

**SIZE: PLAIN 1 TILE (500MM X 500MM) = 2.69 SQFT**

**INTERLOCKING 1 TILE (500MM X 500MM) = 2.5 SQFT**

**THICKNESS: 8MM, 10MM, 15MM, 20MM, 25MM, 30MM & 35MM**

**COLORS: BLACK, TERRACOTTA, GREY, BLUE, GREEN, MULTISPARKLED EPDM & WHITE SPARKLED EPDM**

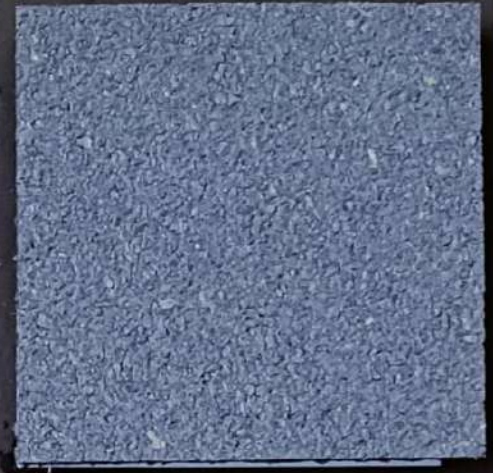
**EXCLUSIVE MADE IN INDIA PRODUCT FOR EXTERIOR  
AND INTERIOR GRADE USAGE**



**BLACK**



**TERRACOTTA**



**GREY**



**BLUE**



**GREEN**



**MULTISPARKLED EPDM**



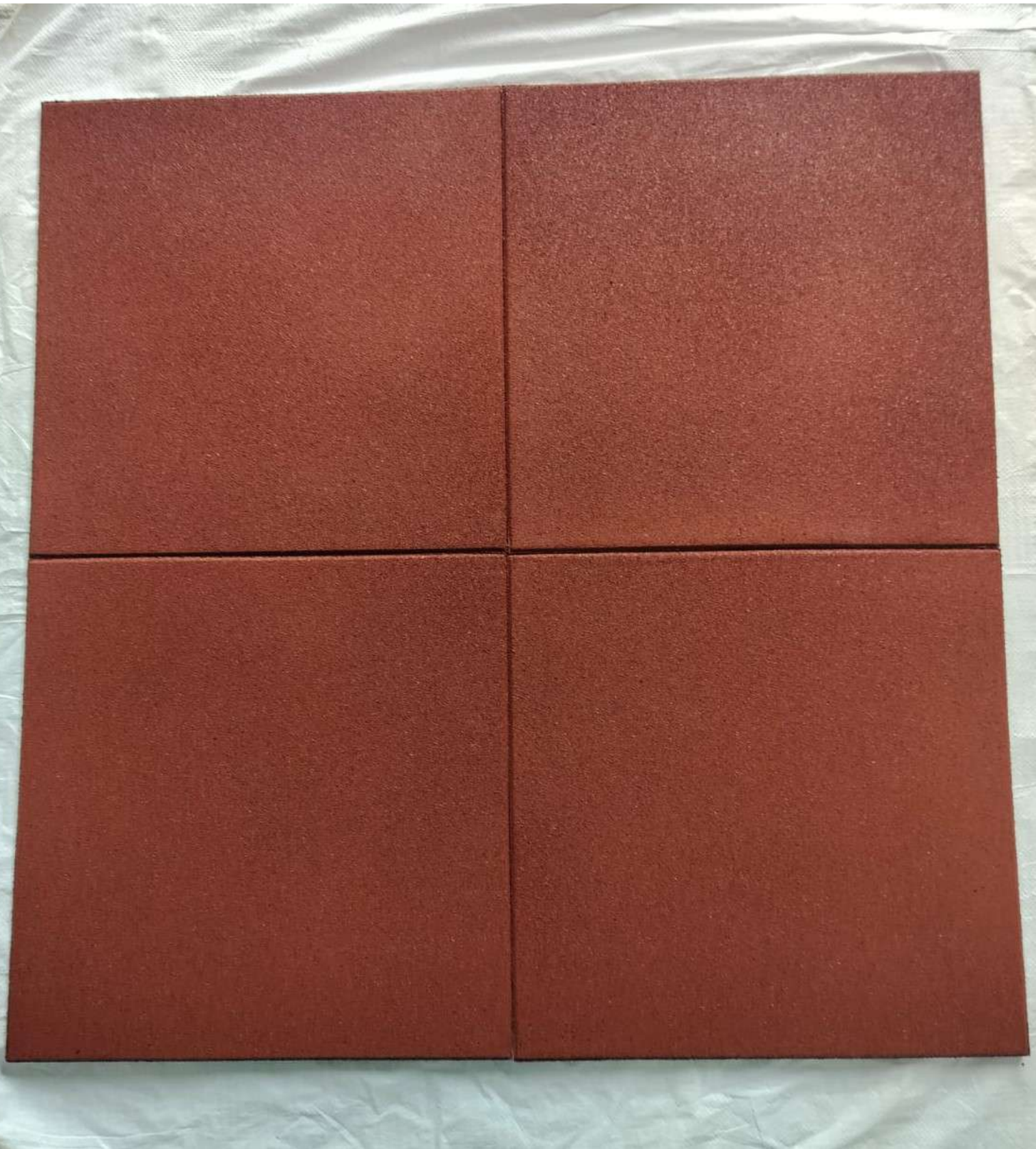
**WHITE SPARKLED EPDM**

**MADE IN INDIA**  
**RUBBER SAFETY FLOORS**

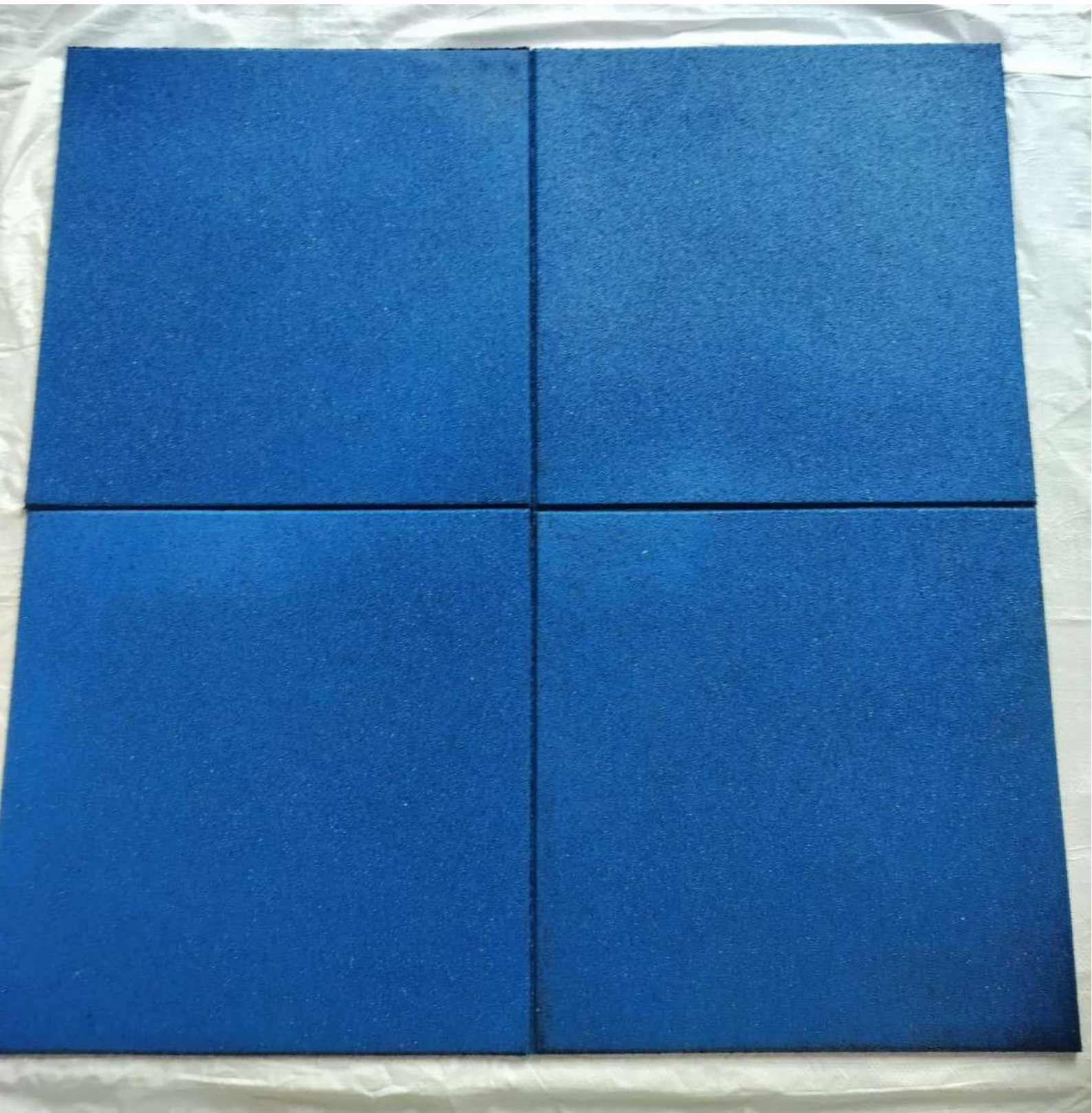


**# ATMANIRBHAR BHARAT**  
**# LOCAL KE LIYE VOCAL**

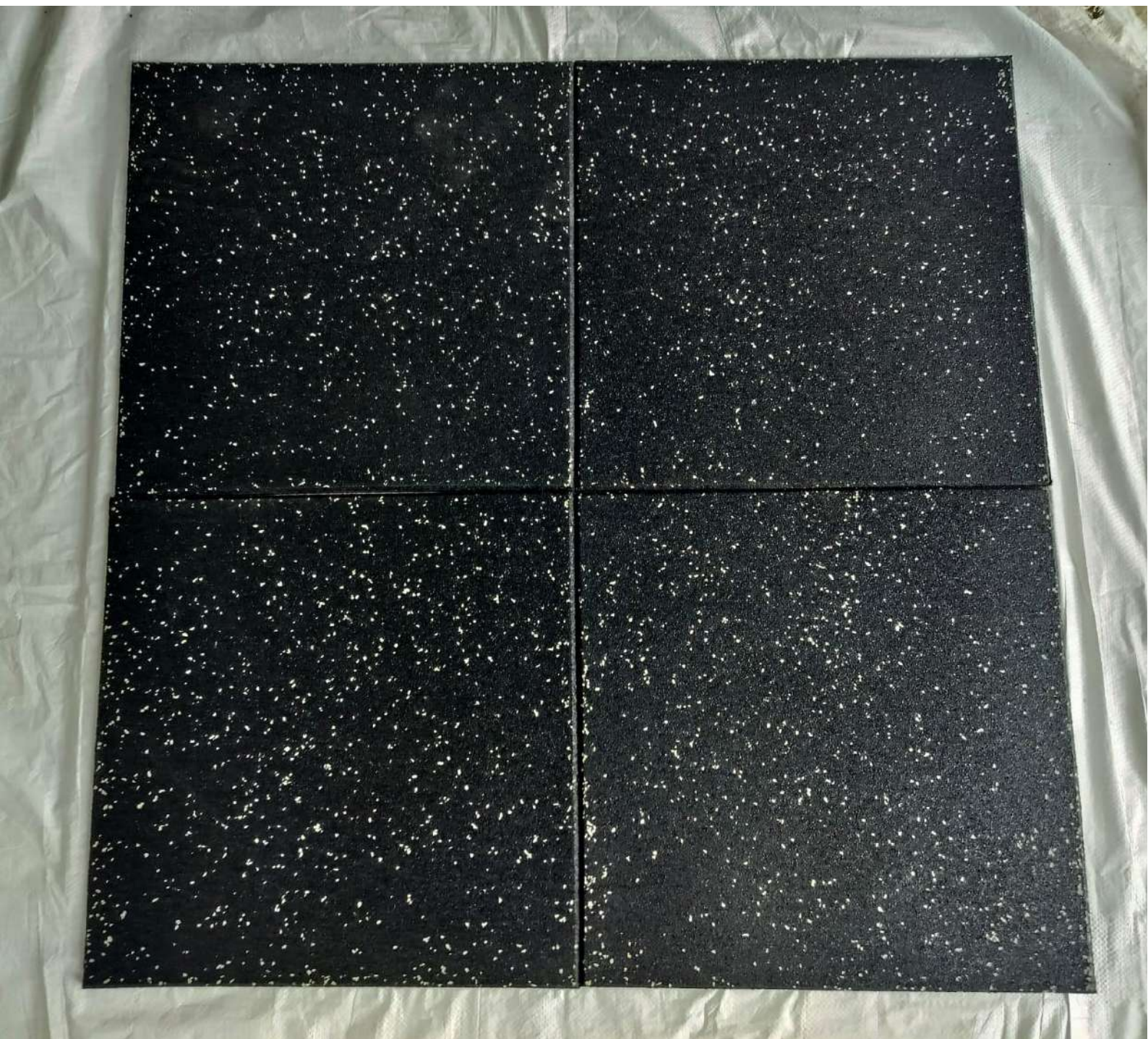














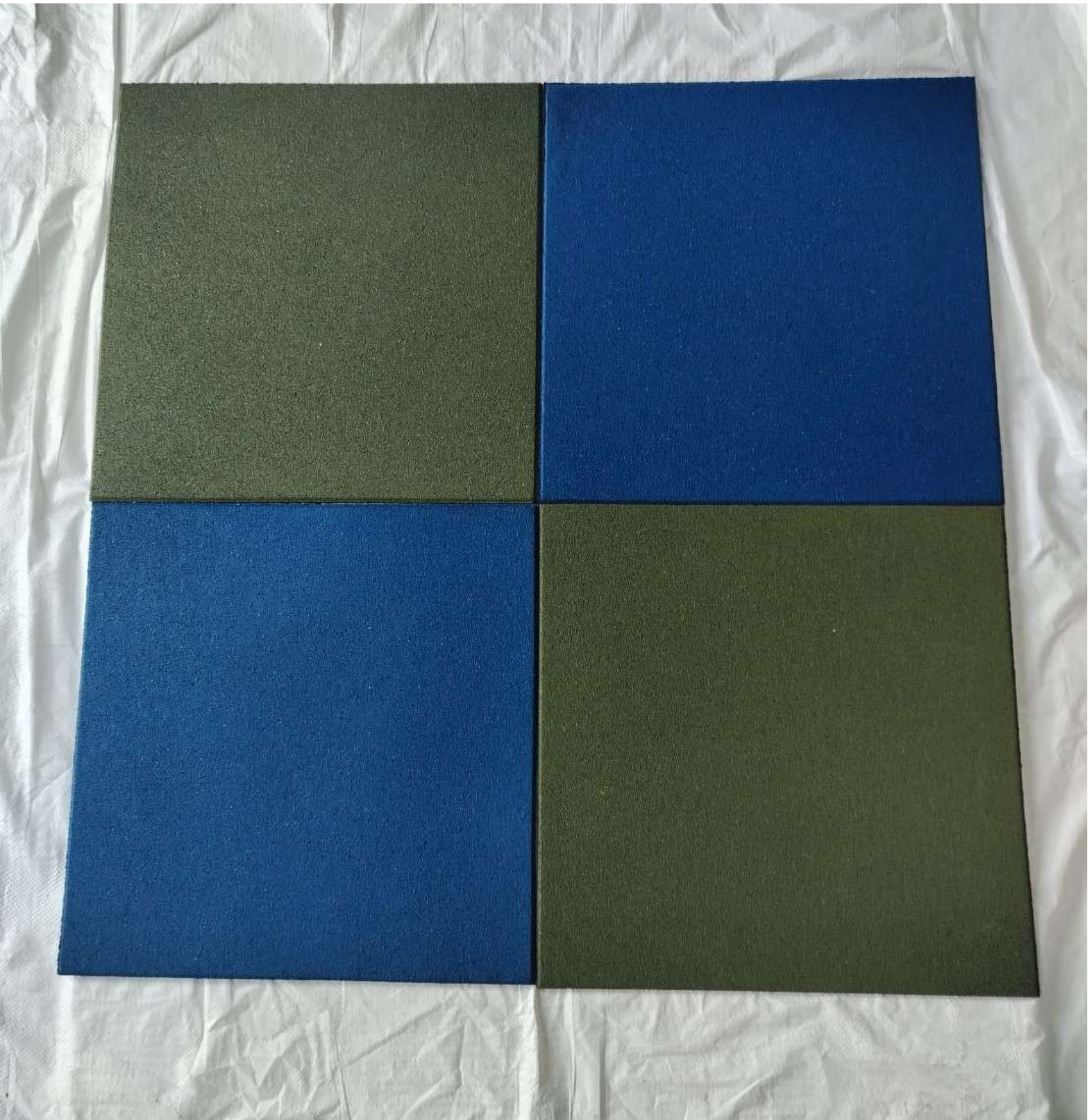
RUBBER TILES WITH SPARKLED EPDM

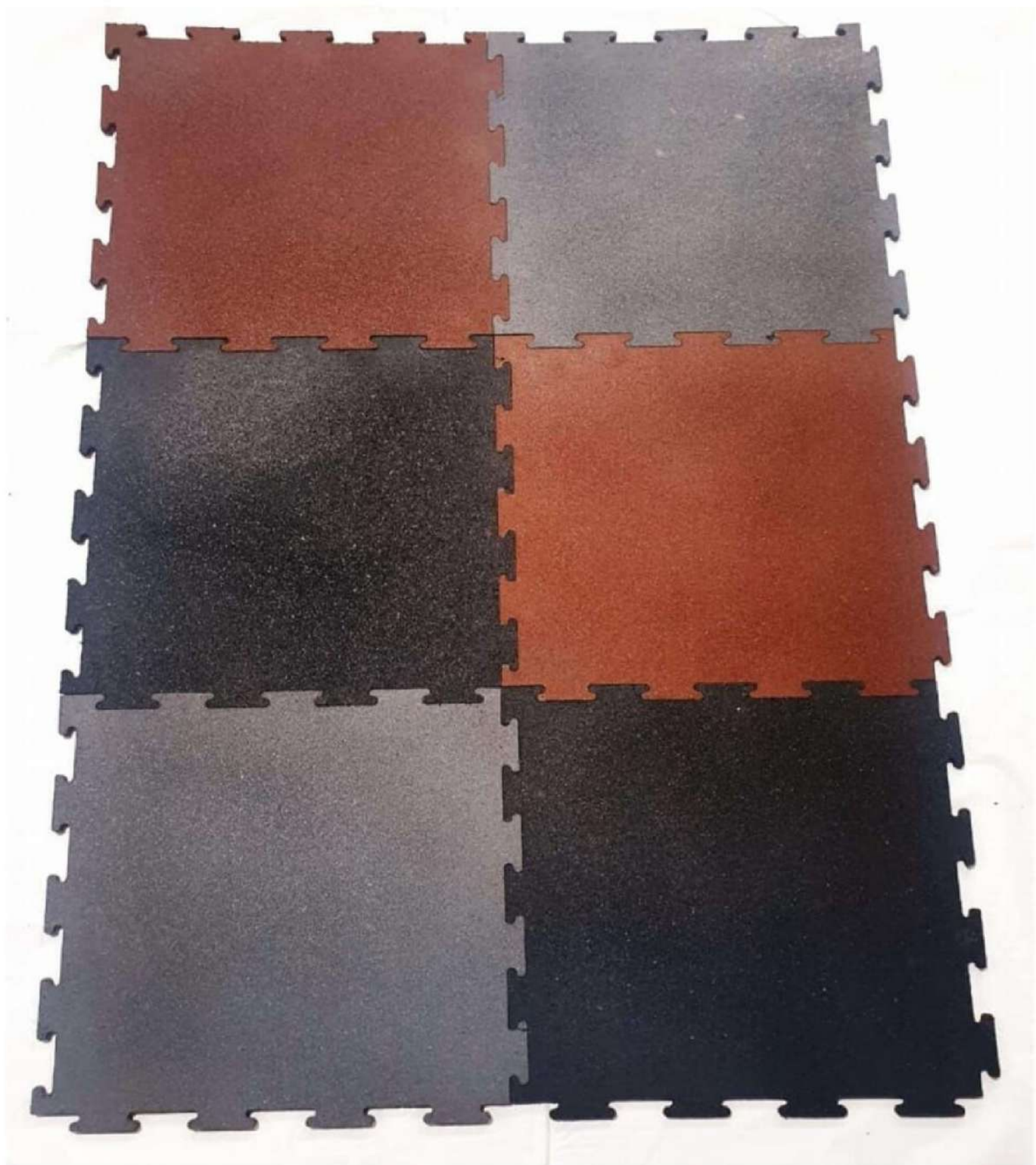




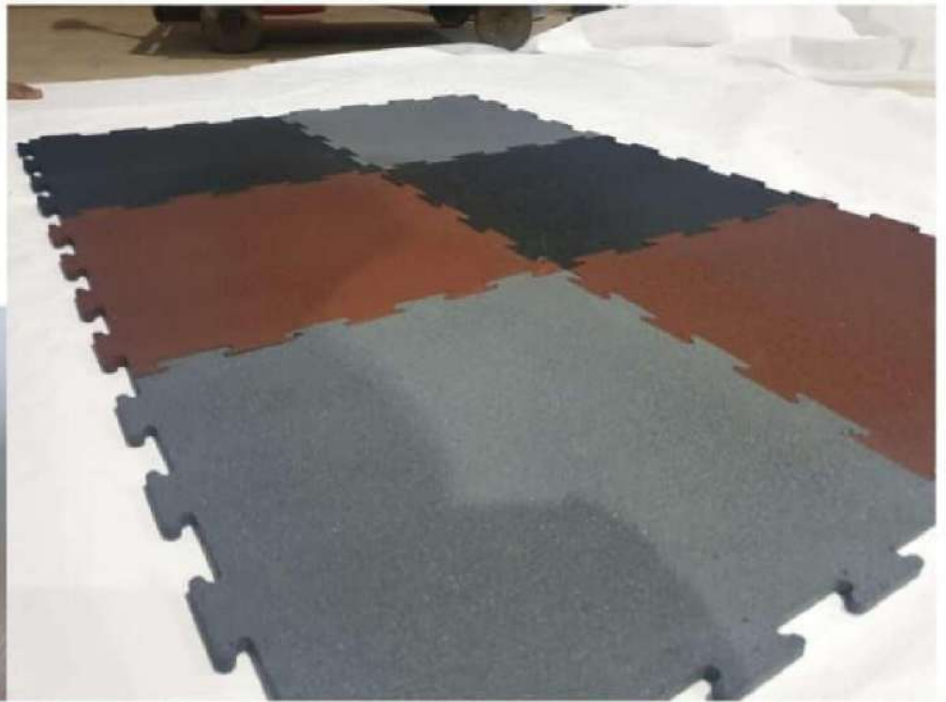








## INTERLOCKING PATTERN

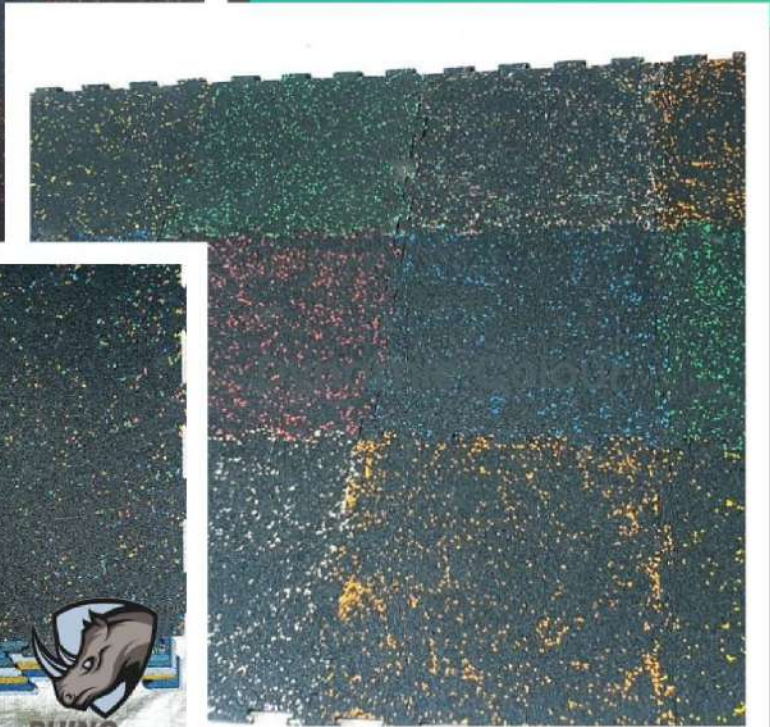


Brand @Hiyastylishfloors



# RHINO RUBBER

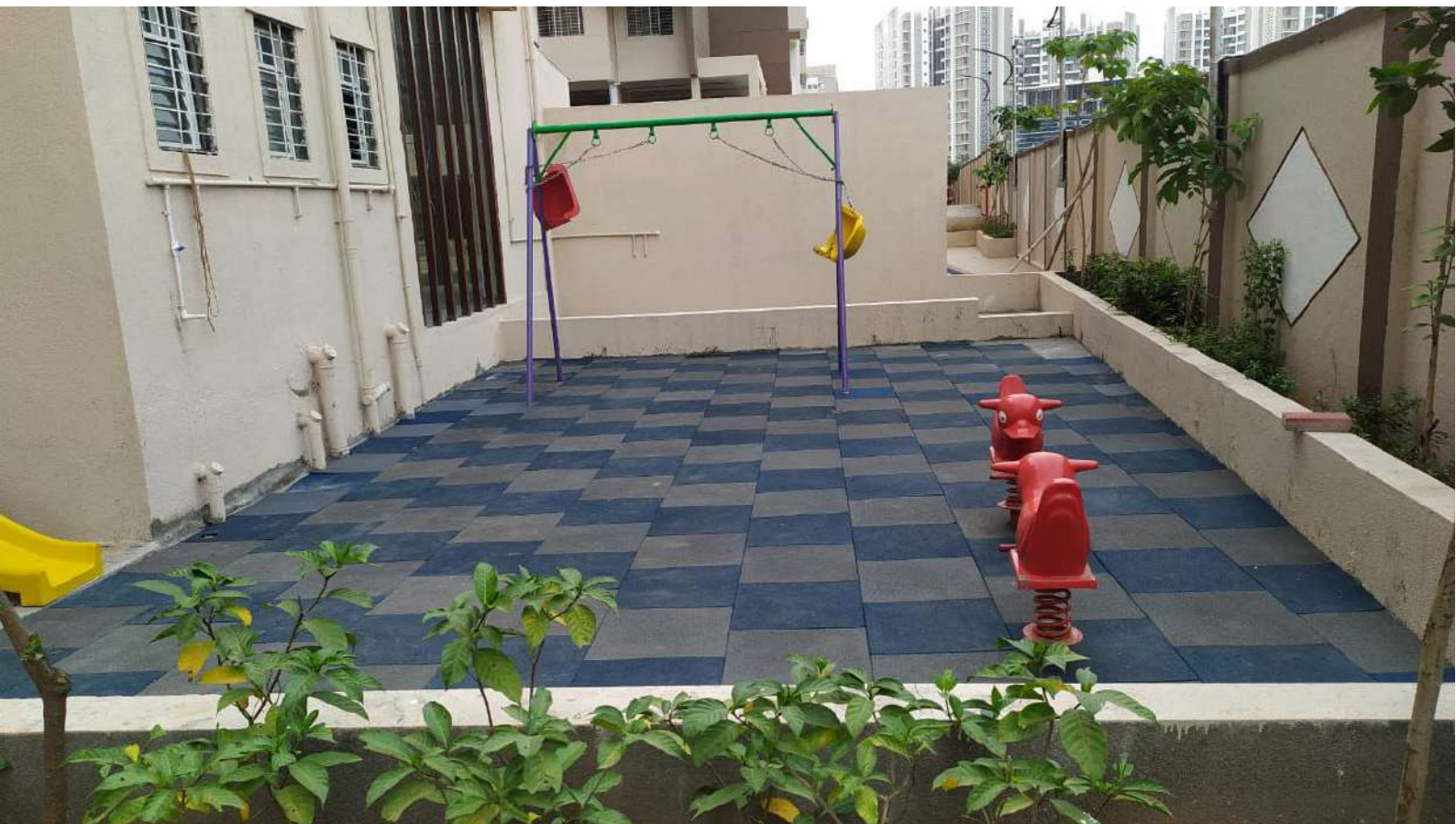
SPARKLED EPDM  
RUBBER TILES



Brand @Hiyastylishfloors

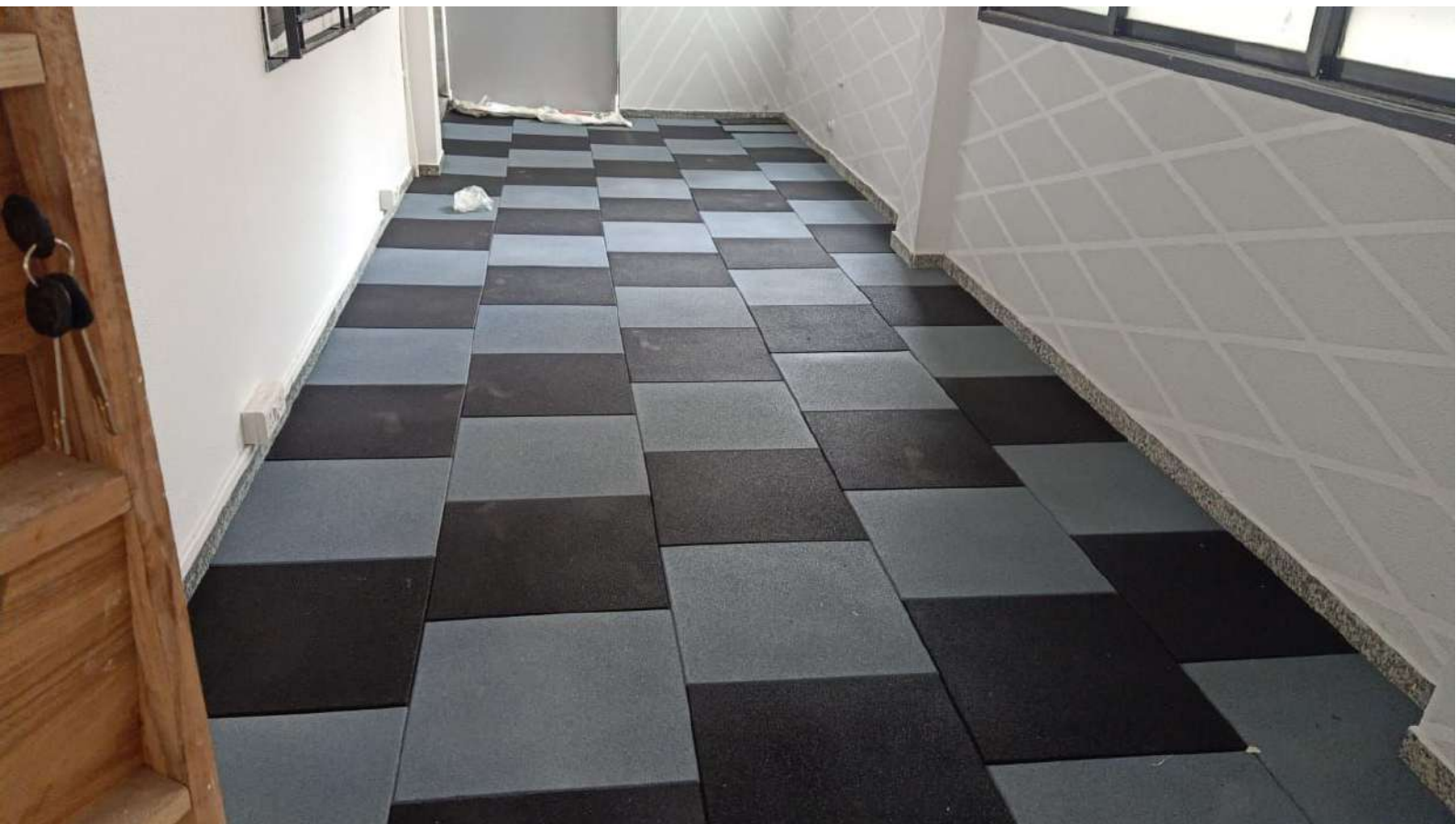


INTERLOCKING PATTERNS













TM

# HIYA

THE COMPLETE FLOOR SOLUTIONS

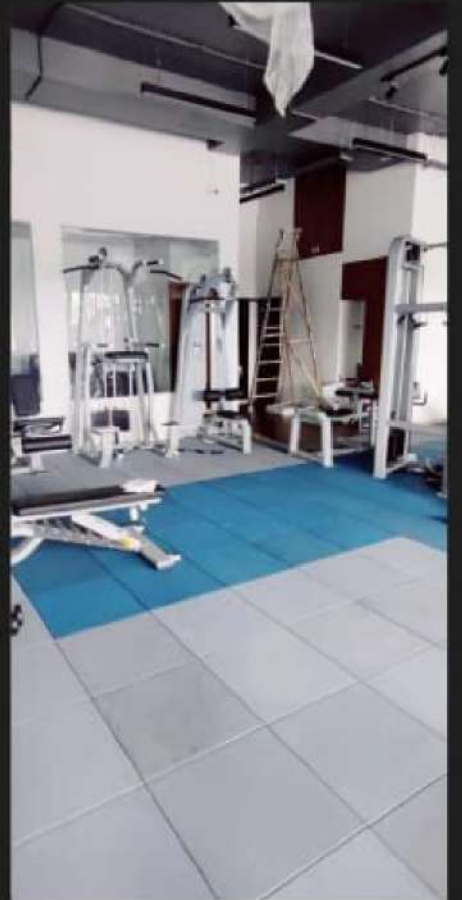


# OUTDOOR INTERLOCKING SITE COMPLETED AT GOA

 [Info@Hiyafloors.com](mailto:Info@Hiyafloors.com)

 [www.Hiyafloors.com](http://www.Hiyafloors.com)





**GYM FLOORING BY RHINO RUBBER**



# SITE COMPLETED BY OUR DEALER IN SURAT, GUJARAT



BRAND @ HIYASTYLISHFLOORS

Rhino Red & Grey Rubber Tiles Collection With Standard Size, Designs and Colour For the Interior and Exterior Areas.

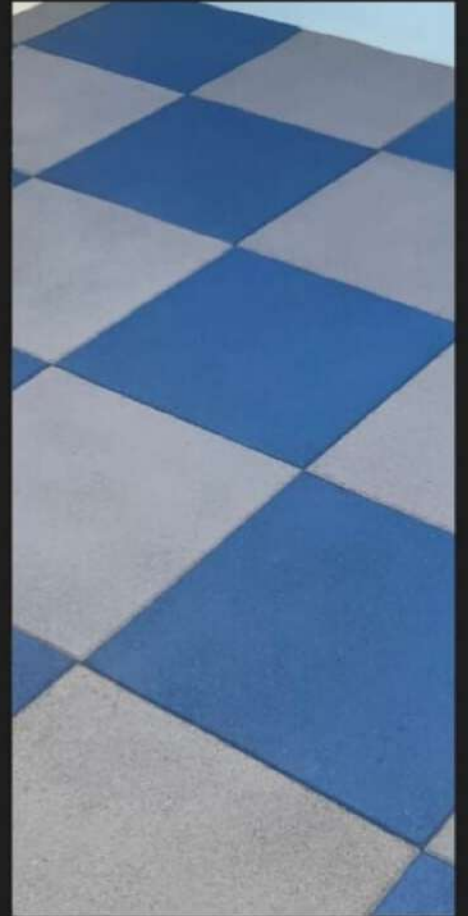
Don't Forget to Visit Our Web at [www.Hiyafloors.com](http://www.Hiyafloors.com)





[www.hiyafloors.com](http://www.hiyafloors.com)





**SITE DONE BY OUR DEALER IN GOA**





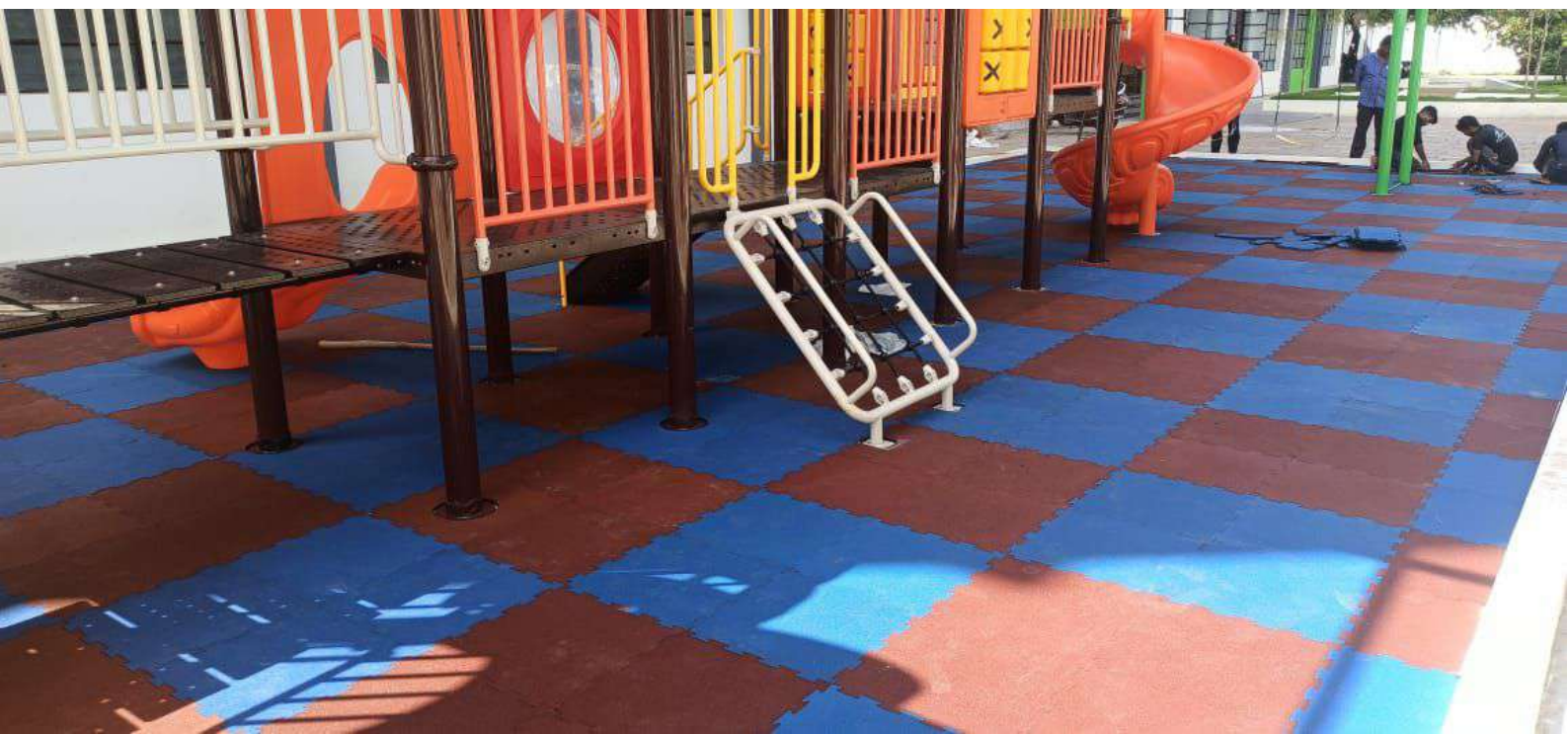
# RHINO RUBBER TILES INSTALLED AT CAR SERVICE CENTRE.

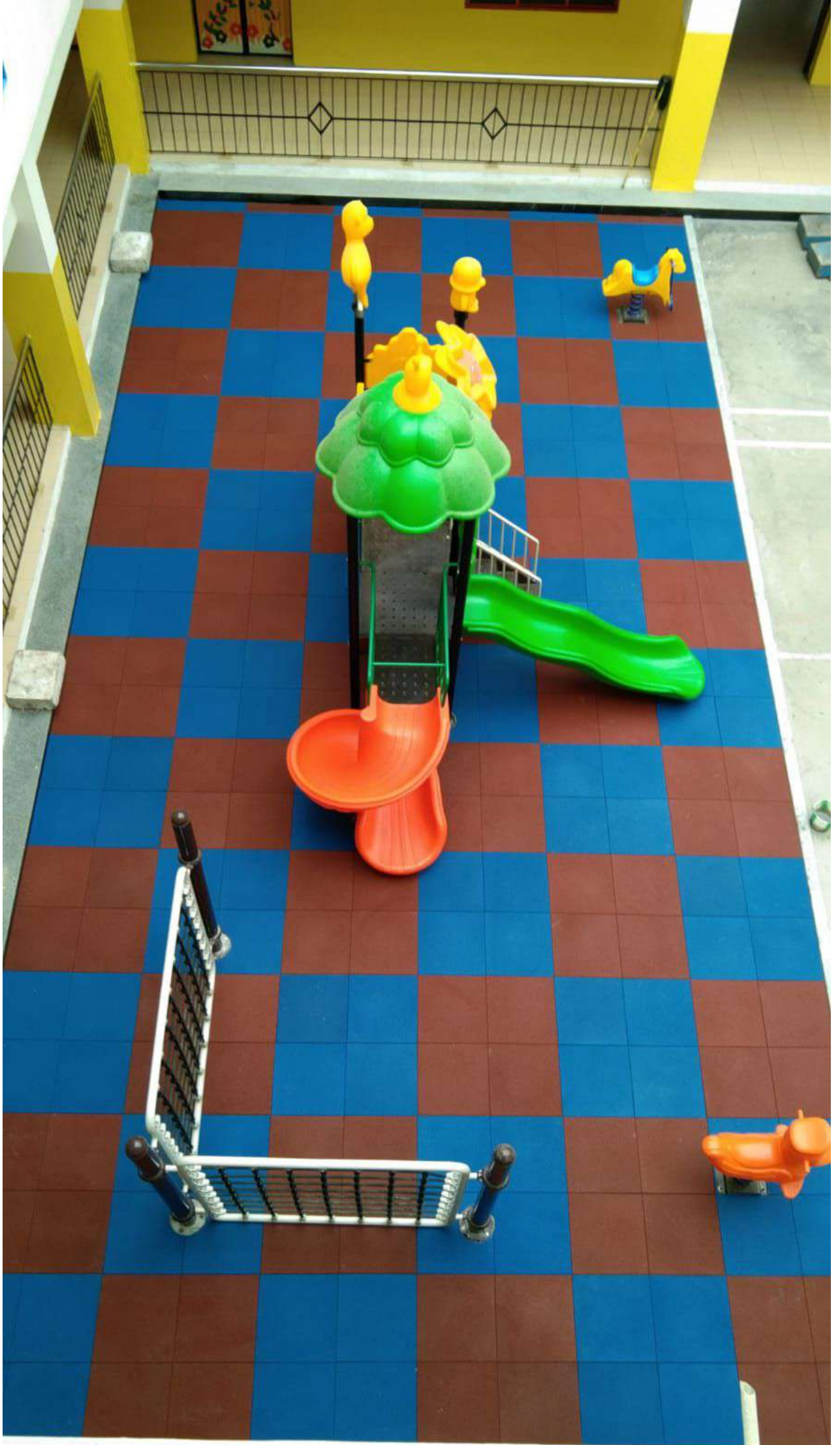
Brand @Hiyastylisfloors Rubber Tiles  
Manufacturer



LEARN MORE AT  
[HIYAFLOORS.COM](http://HIYAFLOORS.COM).







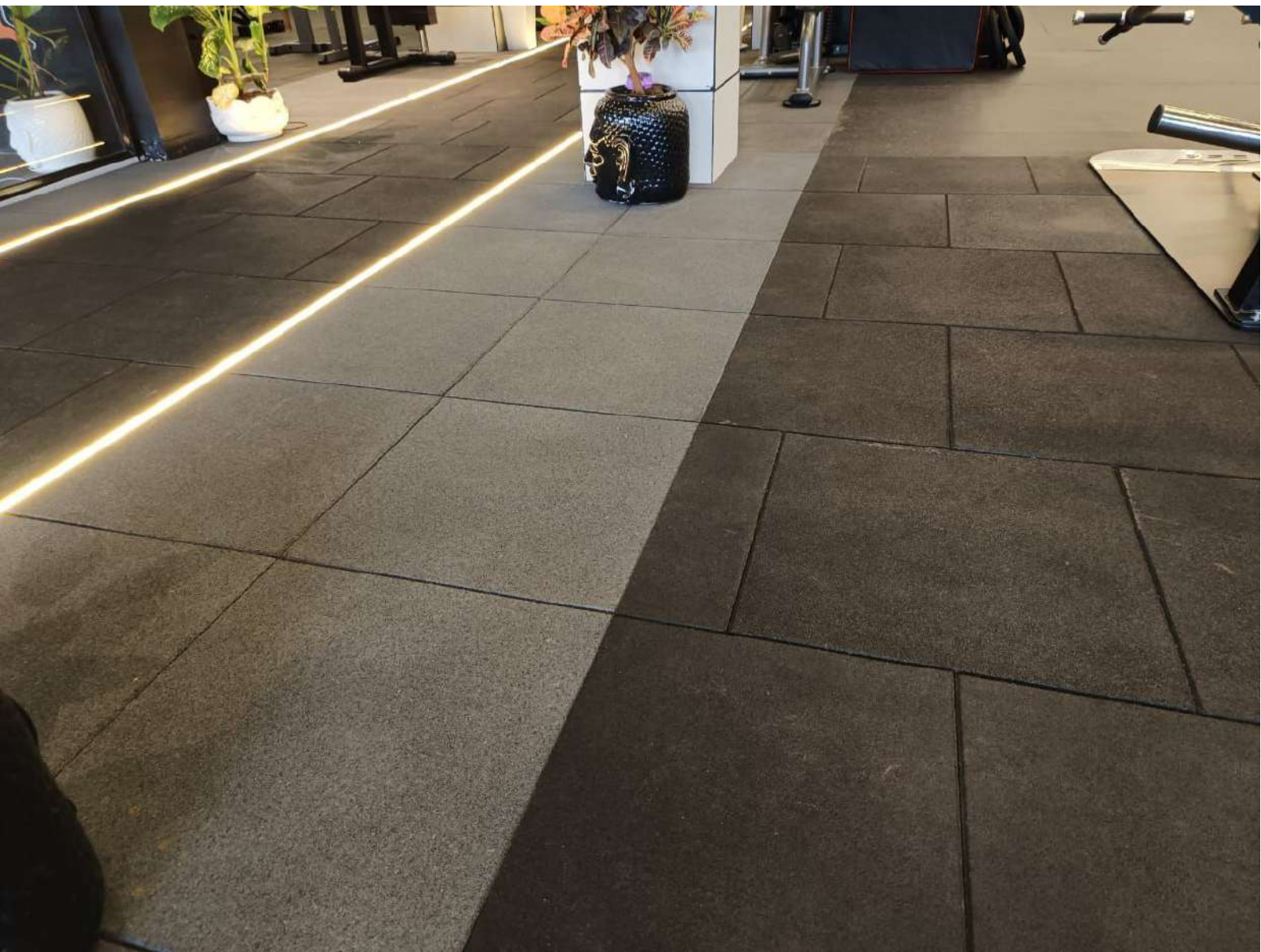


  
**EXCUSES  
DON'T  
BURN  
CALORIES**

**BURN**  
EXERCISE MAT

 1 Single leg shoulder press	 2 Mountain climber
 3 Side plank	 4 Forward lunge with torso rotation
 5 Side leg raise	 6 Hamstring curl
 7 Bent leg crunch	 8 Jumping in place
 9 Dumbbell triceps extension	 10 Leg extension exercise
 11 Double leg raise	 12 Dumbbell forward lateral raise











## PLAIN PATTERN









